

Light efficiency:



Light quality:



Color temperature:



Output: 1805 lm

Peak: 7802 cd

Power: 56.8 W

PF: 0.98



Tracking number: [n/a](#)

Product name:

ElectraPix Bar 16

Item number:

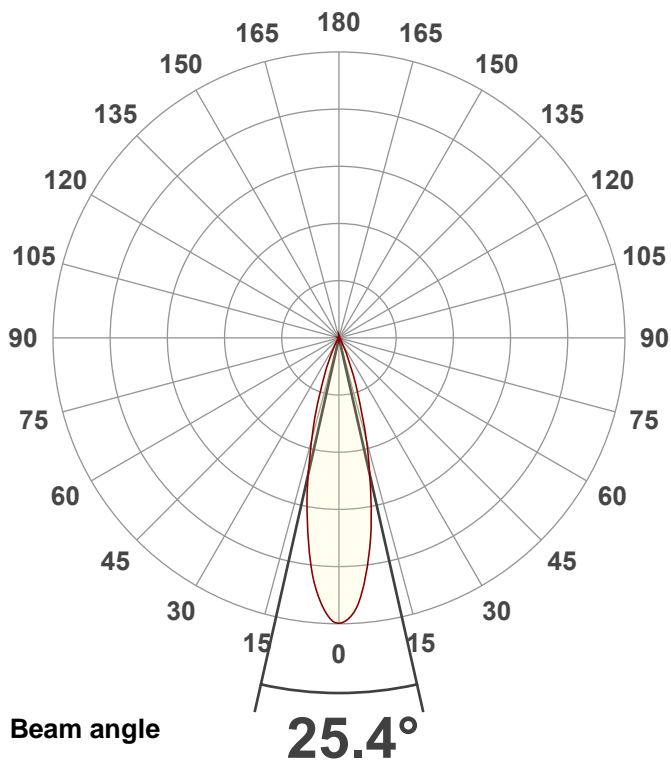
3200K

Date and time:

8/28/2024 4:31:26 PM

Description:

@ 30

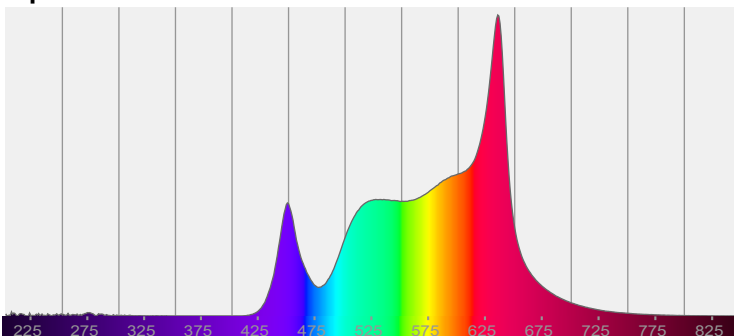


CIE 1931

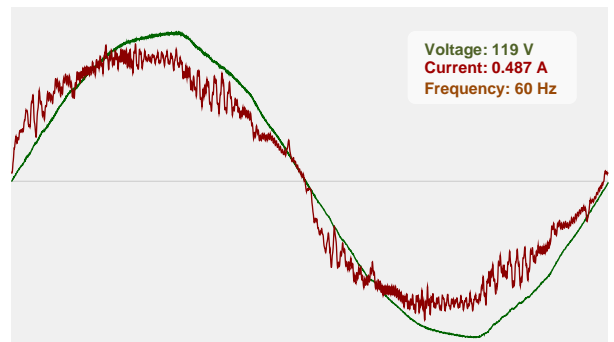
x: 0.423

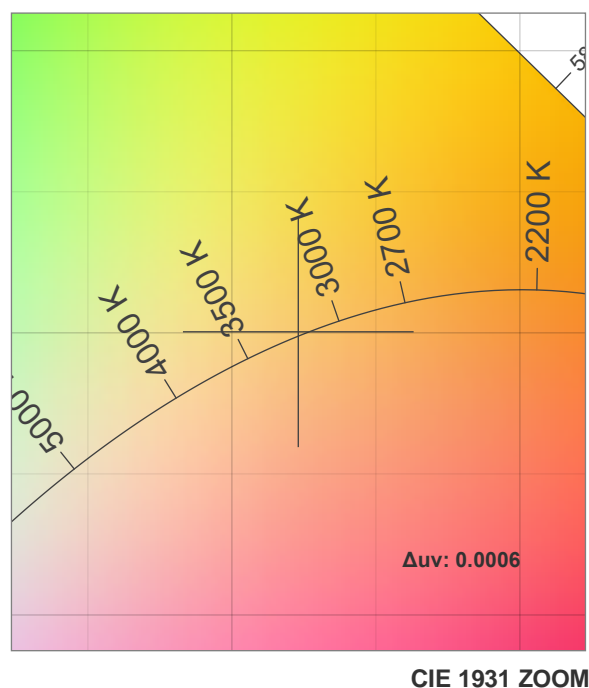
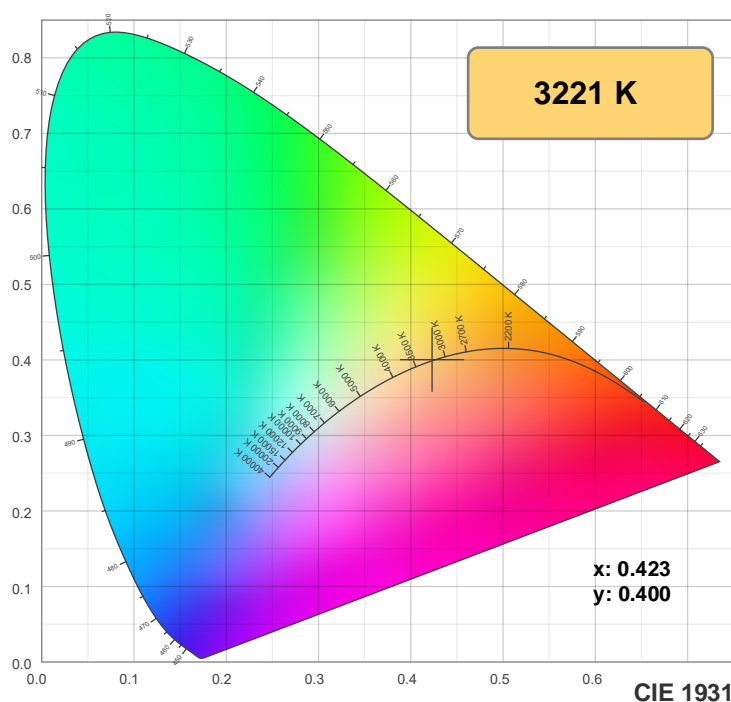
y: 0.400

Spectra

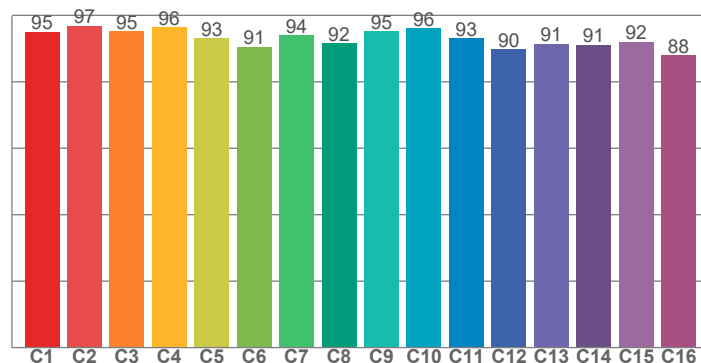


Power

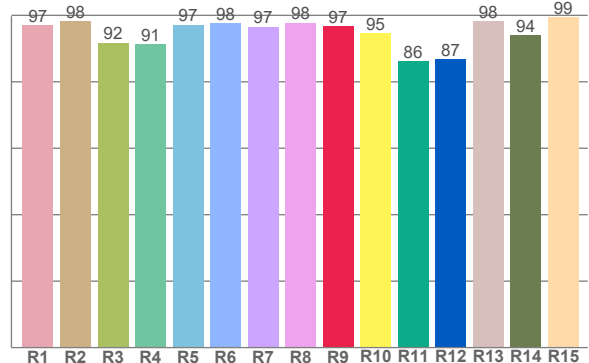




TM-30: 93.5



CRI: 95.9 (R1-R8)



CRI R values, only R1-R8 are used to calculate final CRI value

R1	R2	R3	R4	R5	R6	R7	R8	R9	R10	R11	R12	R13	R14	R15
97.1	98.2	91.8	91.3	97.2	97.6	96.6	97.8	96.7	94.6	86.2	86.8	98.3	94.1	99.4

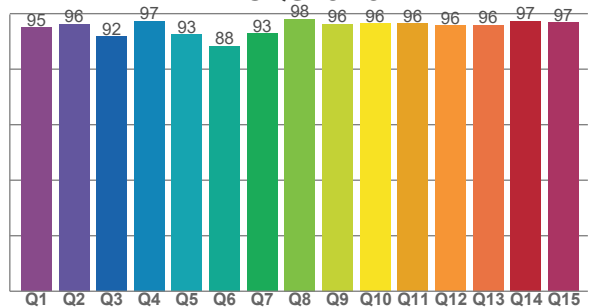
TM30 C values, 16 binned values out of total of 99 C values

C1	C2	C3	C4	C5	C6	C7	C8	C9	C10	C11	C12	C13	C14	C15	C16
95.0	96.8	95.2	96.5	93.1	90.5	94.0	91.6	95.1	96.1	93.2	89.8	91.4	91.1	92.0	88.0

CQS Q values

Q1	Q2	Q3	Q4	Q5	Q6	Q7	Q8	Q9	Q10	Q11	Q12	Q13	Q14	Q15
94.9	96.2	91.8	97.3	92.5	88.4	92.8	98.1	96.3	96.4	96.4	95.7	95.9	97.4	96.7

CQS: 94.3



Color parameters

Color temperature	Color rendering index	Red component	Color fidelity	Color gamut	Color quality scale	Color coordinate cie 1931	Color coordinate cie 1931	Color coordinate	Color coordinate	Color deviation from black body
CCT	CRI	CRI R9	TM30 Rf	TM30 Rg	CQS	x	y	u	v	Δuv
3221 K	95.9	96.7	93.5	104.3	94.3	0.423	0.400	0.243	0.345	0.0006

TM-30 details

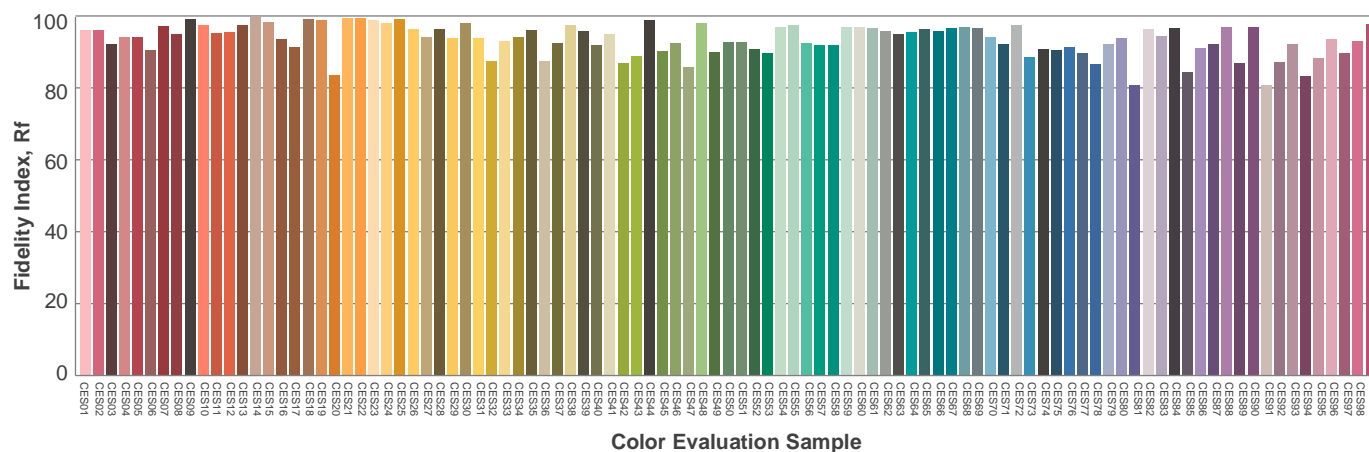
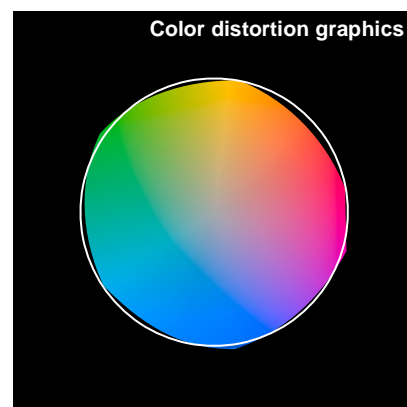
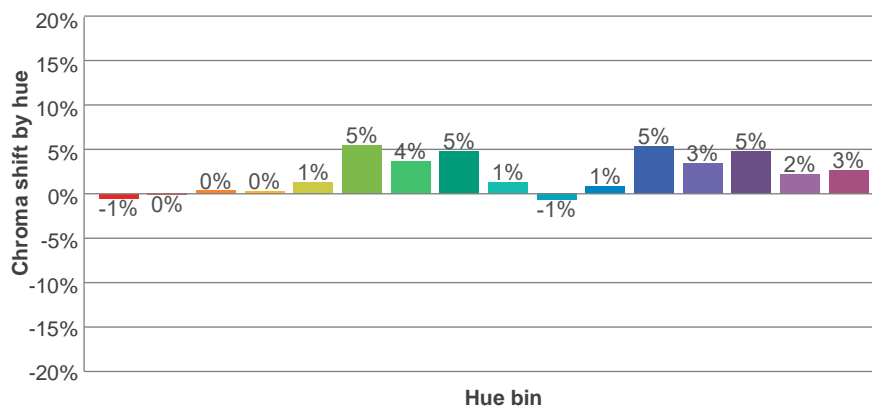
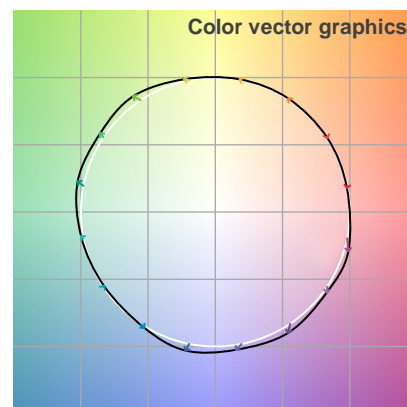
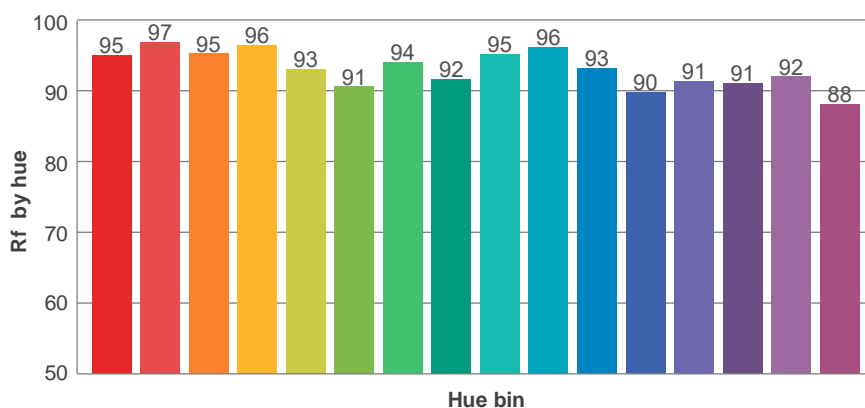
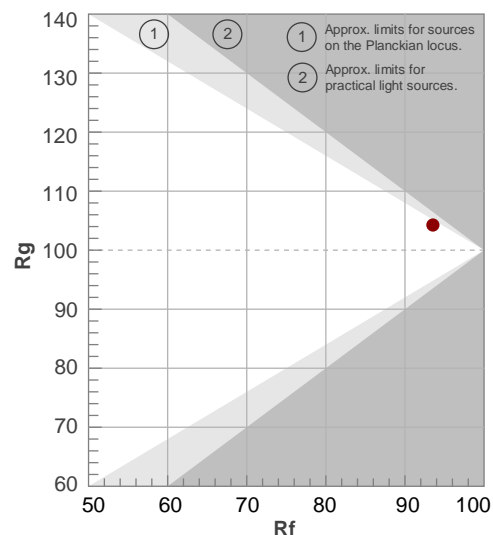
Rf 93.5

Fidelity index Rf

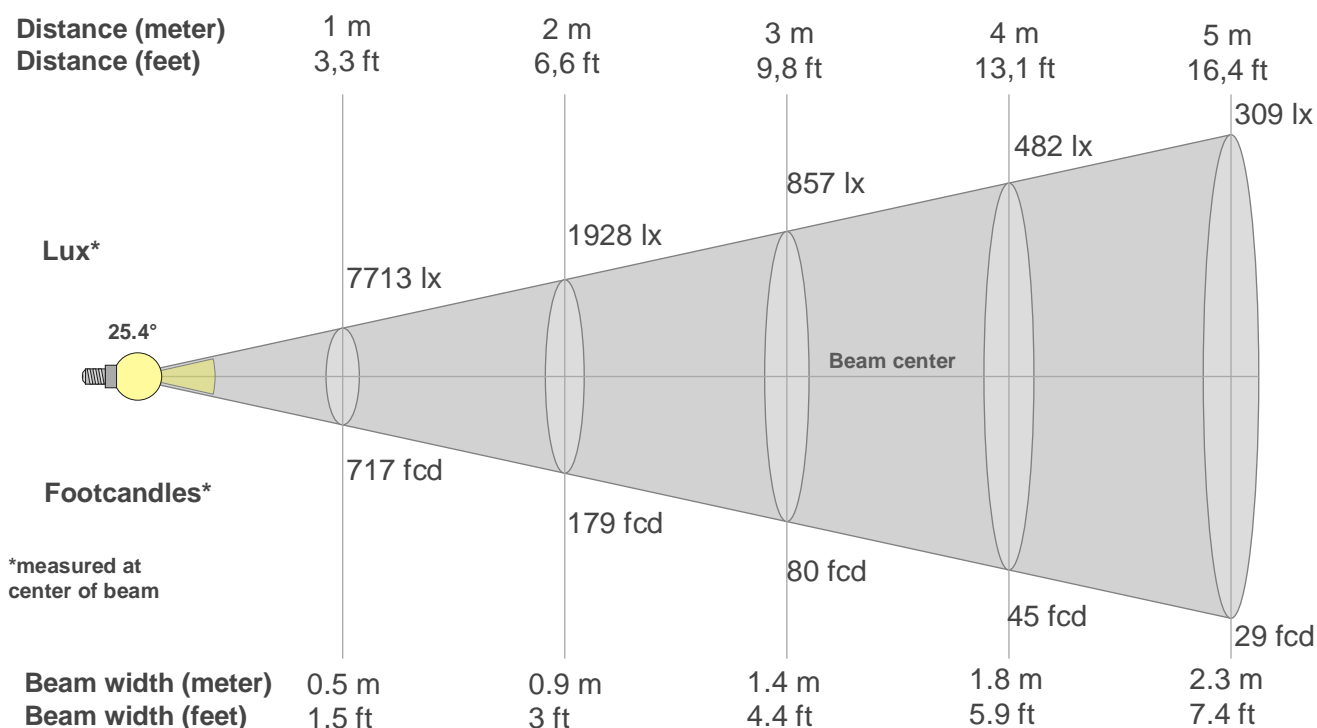
Rg 104.3

Gamut index Rg

Hue Bin	R _f	Shifts (%)	
		Chroma	Hue
1	95	-1%	-2%
2	97	0%	0%
3	95	0%	2%
4	96	0%	1%
5	93	1%	3%
6	91	5%	3%
7	94	4%	-1%
8	92	5%	-2%
9	95	1%	-2%
10	96	-1%	0%
11	93	1%	4%
12	90	5%	-2%
13	91	3%	-5%
14	91	5%	-5%
15	92	2%	-4%
16	88	3%	-9%



Beam details



Beam intensities from 1-20m

1m	2m	3m	4m	5m	6m	7m	8m	9m	10m	11m	12m	13m	14m	15m	16m	17m	18m	19m	20m
3.3ft	6.6ft	9.8ft	13.1ft	16.4ft	19.7ft	23ft	26.2ft	29.5ft	32.8ft	36.1ft	39.4ft	42.7ft	45.9ft	49.2ft	52.5ft	55.8ft	59.1ft	62.3ft	65.6ft
7713lx	1928lx	857lx	482lx	309lx	214lx	157lx	121lx	95lx	77lx	64lx	54lx	46lx	39lx	34lx	30lx	27lx	24lx	21lx	19lx
716.5fcd	179.1fcd	79.6fcd	44.8fcd	28.7fcd	19.9fcd	14.6fcd	11.2fcd	8.8fcd	7.2fcd	5.9fcd	5fcd	4.2fcd	3.7fcd	3.2fcd	2.8fcd	2.5fcd	2.2fcd	2fcd	1.8fcd

Intensities in 0° c-plane

0°	2°	4°	6°	8°	10°	12°	14°	16°	18°	20°	22°	24°	26°	28°	30°	32°	34°	36°	38°
7713	7538	7356	6637	5917	5108	4213	3321	2608	1896	1352	970	591	444	297	201	154	107	92	77
100%	98%	95%	86%	77%	66%	55%	43%	34%	25%	18%	13%	8%	6%	4%	3%	2%	1%	1%	1%

Intensities in 90° c-plane

0°	2°	4°	6°	8°	10°	12°	14°	16°	18°	20°	22°	24°	26°	28°	30°	32°	34°	36°	38°
7713	7538	7356	6637	5917	5108	4213	3321	2608	1896	1352	970	591	444	297	201	154	107	92	77
100%	98%	95%	86%	77%	66%	55%	43%	34%	25%	18%	13%	8%	6%	4%	3%	2%	1%	1%	1%

Intensities in 180° c-plane

0°	2°	4°	6°	8°	10°	12°	14°	16°	18°	20°	22°	24°	26°	28°	30°	32°	34°	36°	38°
7713	7580	7127	6674	5847	5015	4187	3365	2543	1977	1413	988	706	423	317	213	144	111	78	67
100%	98%	92%	87%	76%	65%	54%	44%	33%	26%	18%	13%	9%	5%	4%	3%	2%	1%	1%	1%

Intensities in 270° c-plane

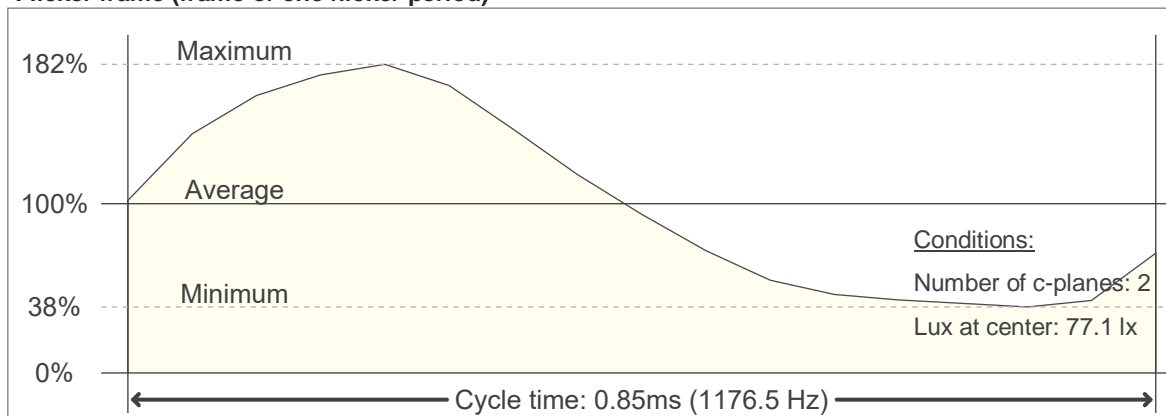
0°	2°	4°	6°	8°	10°	12°	14°	16°	18°	20°	22°	24°	26°	28°	30°	32°	34°	36°	38°
7713	7580	7127	6674	5847	5015	4187	3365	2543	1977	1413	988	706	423	317	213	144	111	78	67
100%	98%	92%	87%	76%	65%	54%	44%	33%	26%	18%	13%	9%	5%	4%	3%	2%	1%	1%	1%

Beam angle 50%	Field angle 10%	Cutoff angle 2,5%	Intensity ratio in 120° cone	Intensity ratio in 90° cone
25.4°	46.5°	60.6°	99.2%	97.1%

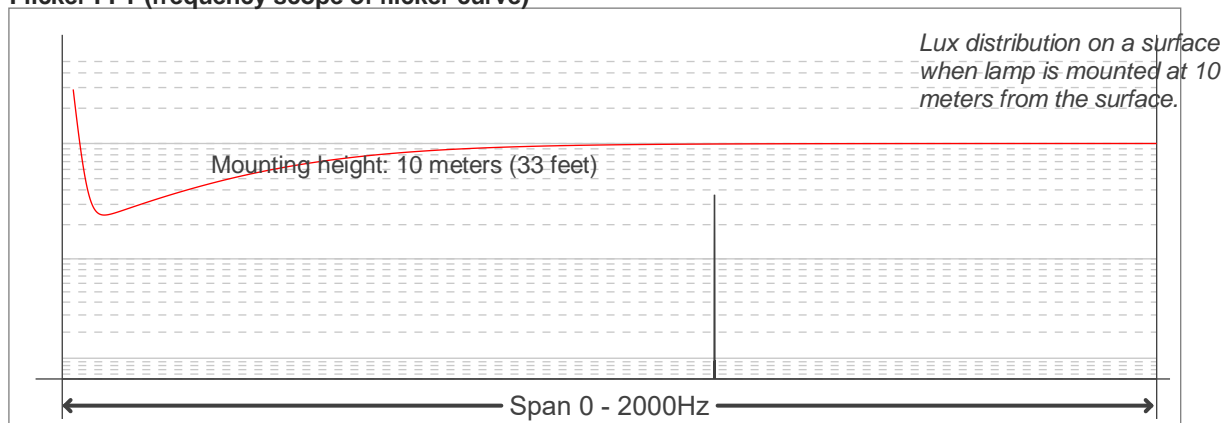
Flicker

Flicker curve (complete sampled flicker signal)

Flicker frame (frame of one flicker period)



Flicker FFT (frequency scope of flicker curve)



Flicker results:

Flicker frequency:		1176.47 Hz	
Flicker index:	0.23	JA8/10 40Hz	0.94 %
Flicker percentage:	68.21 %	JA8/10 90Hz	2.08 %
SVM: (Visual flicker)	0.73	JA8/10 200Hz	4.68 %
PstLM	0.04	JA8/10 400Hz	9.63 %
Mp	0.18	JA8/10 1000Hz	30.38 %

Flicker conditions:

Sample rate:	20000 samples/second
--------------	----------------------